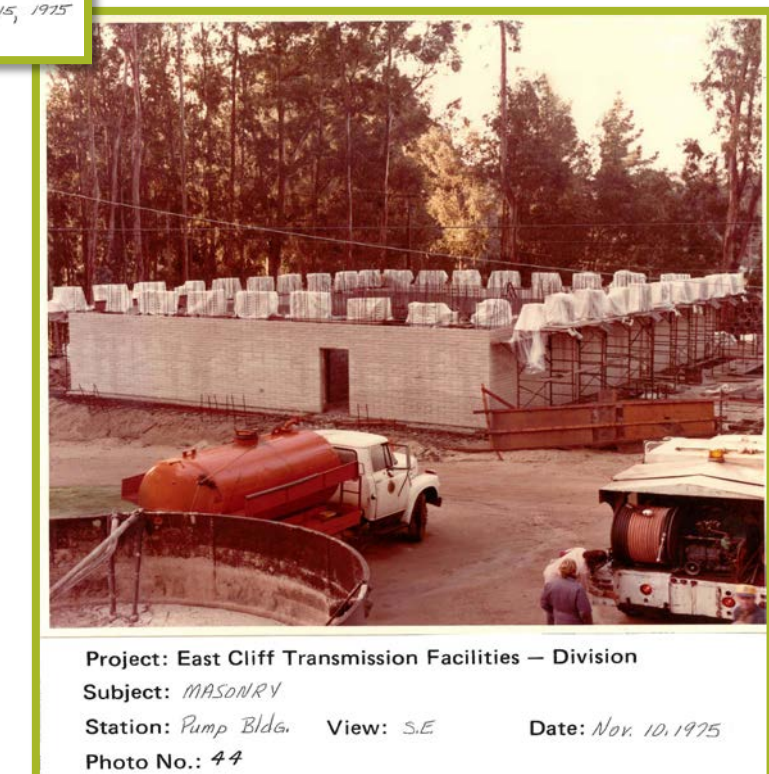
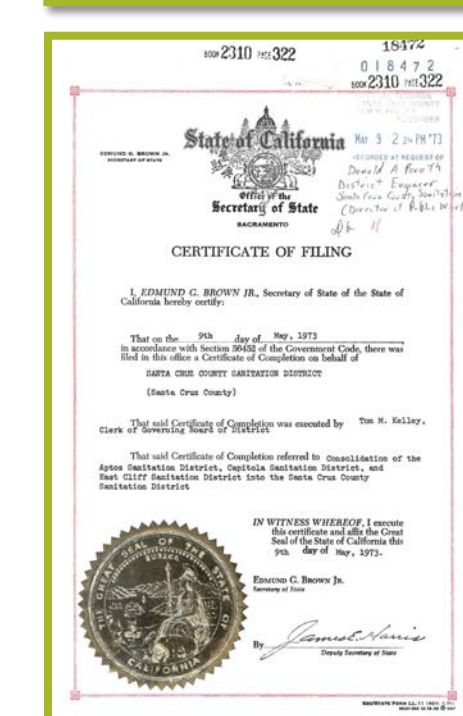
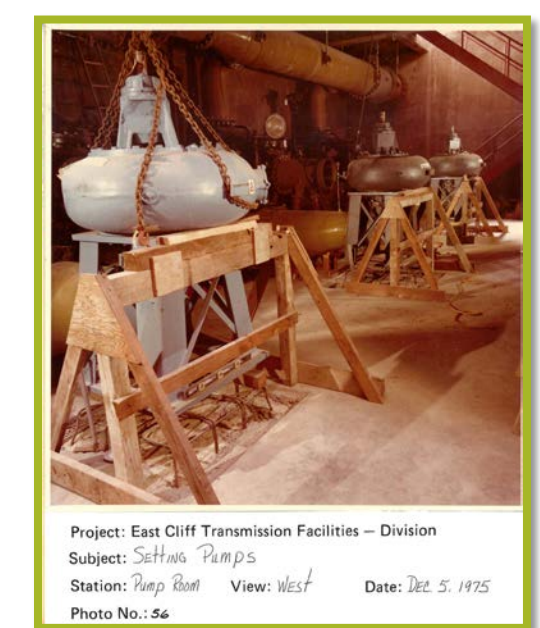
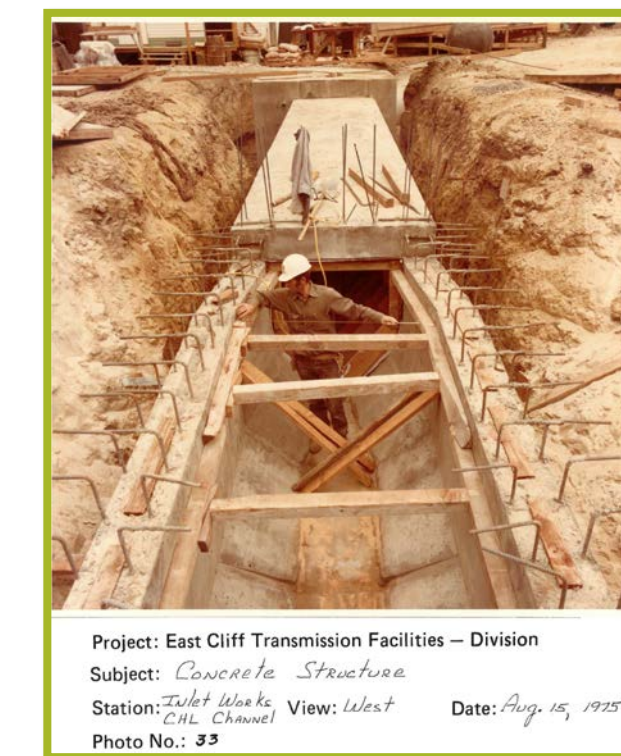
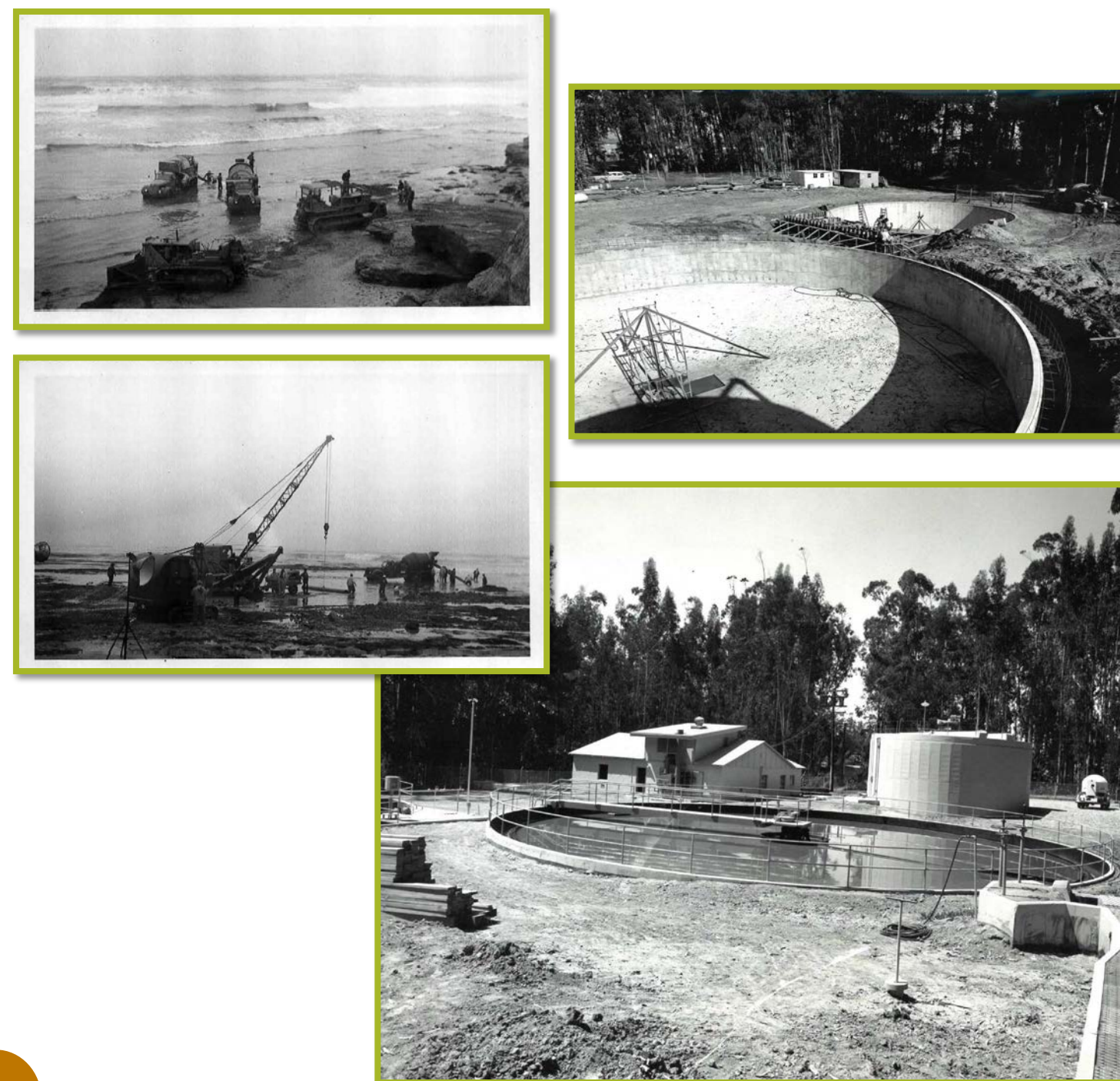
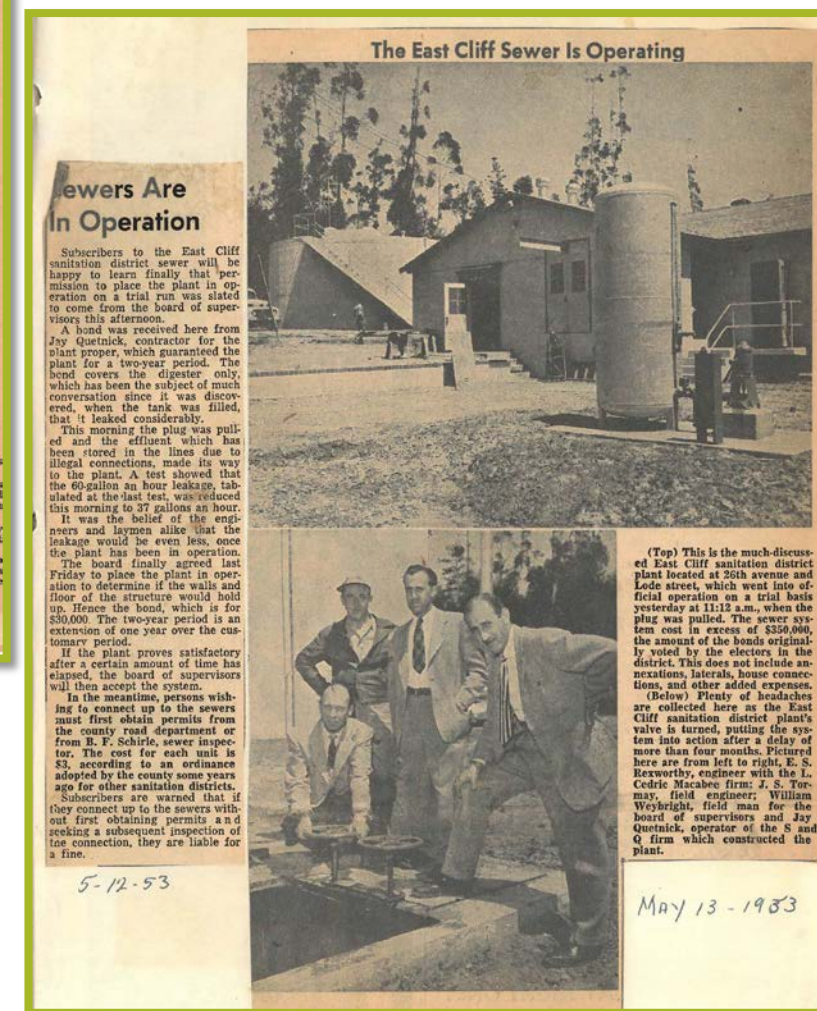
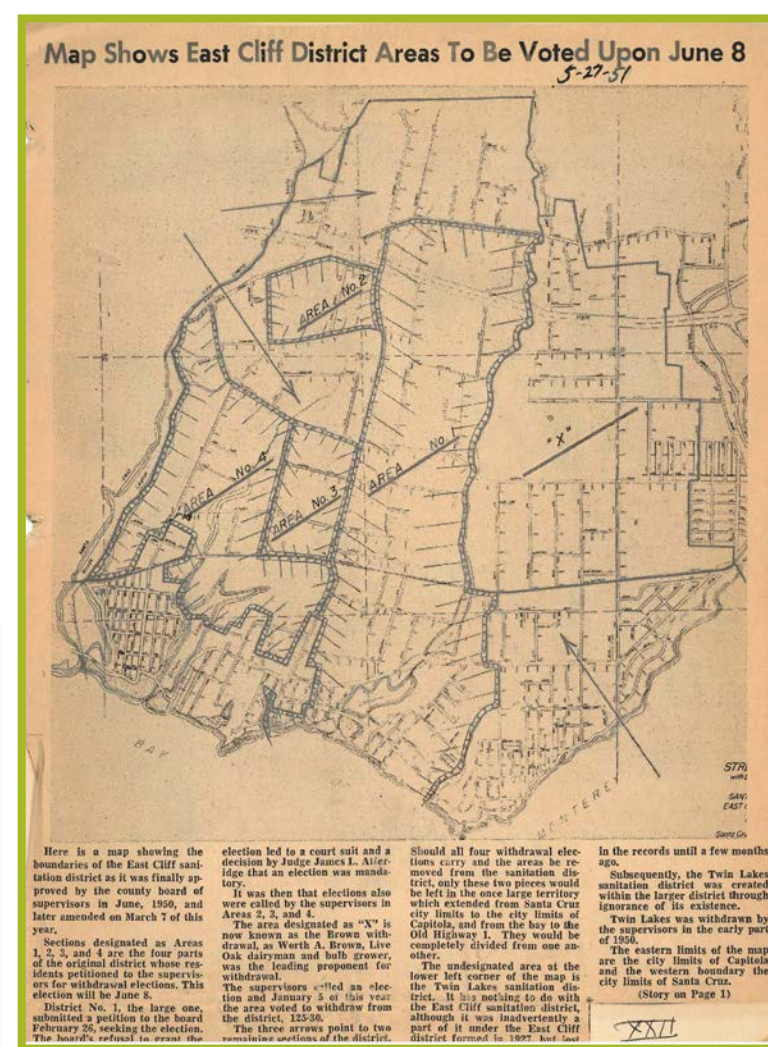
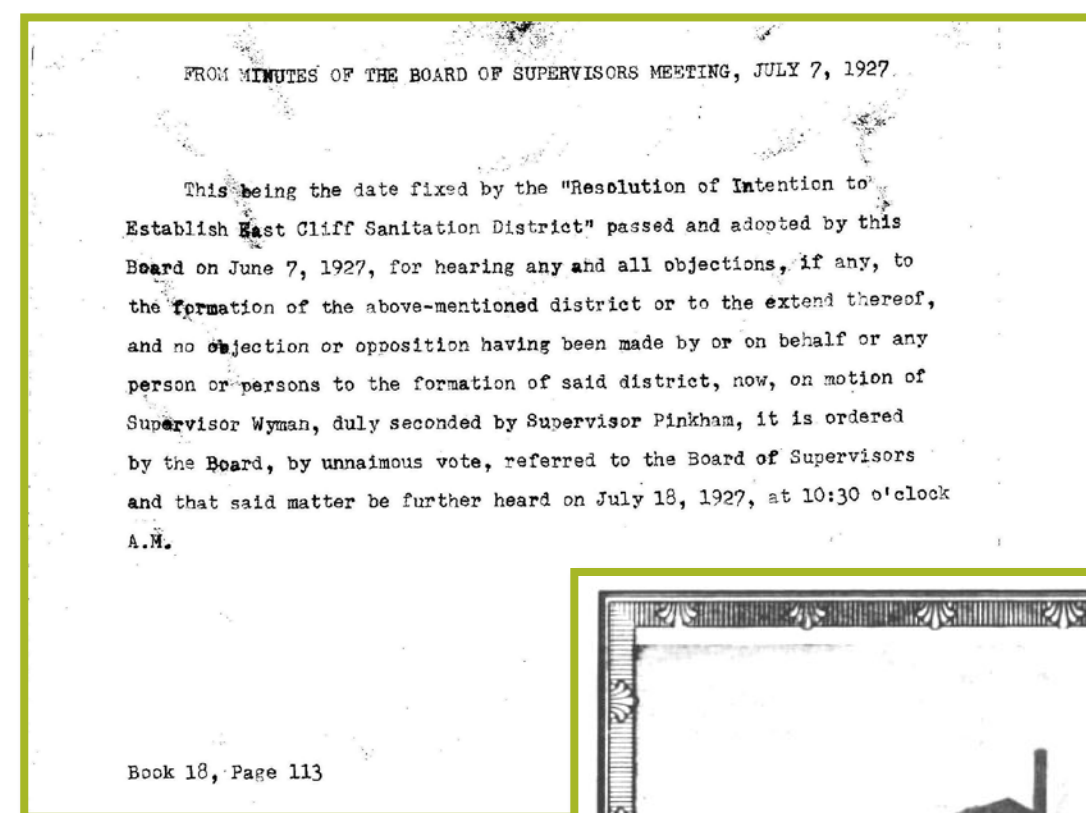


HISTORY OF LODGE STREET FACILITY



1880-1933

- 1880's** Construction of Sanitary Sewers in Santa Cruz Began – Population 4,000
- 1917** Three-fourths of the City Was Sewered by a Gravity System Emptying Into the San Lorenzo River and Monterey Bay
- 1923** County Sanitation District Act of 1923
- 1925** Comprehensive Study Made of Sewage Collection and Disposal in Santa Cruz
- 1927** Establishment of East Cliff Sanitation District in the County of Santa Cruz
- 1928** Waste Water System with Treatment Plant Completed at Neary Lagoon

1934-1956

- 1934** Pleasure Point Community Sewage System
- 1946** East Cliff Sanitation District Data:
 - Homes in the area 2,300
 - Population in the area 8,500
- 1951** East Cliff Sanitation District Data:
 - Homes in the area 3,181
 - Population in the area 10,500
- 1953** Sewage Treatment Plant Built at Lode Street
 - Sanitary sewage collection system
 - Sewage Treatment Plant
 - Sewage force main and outfall extending into Monterey Bay

1957-1972

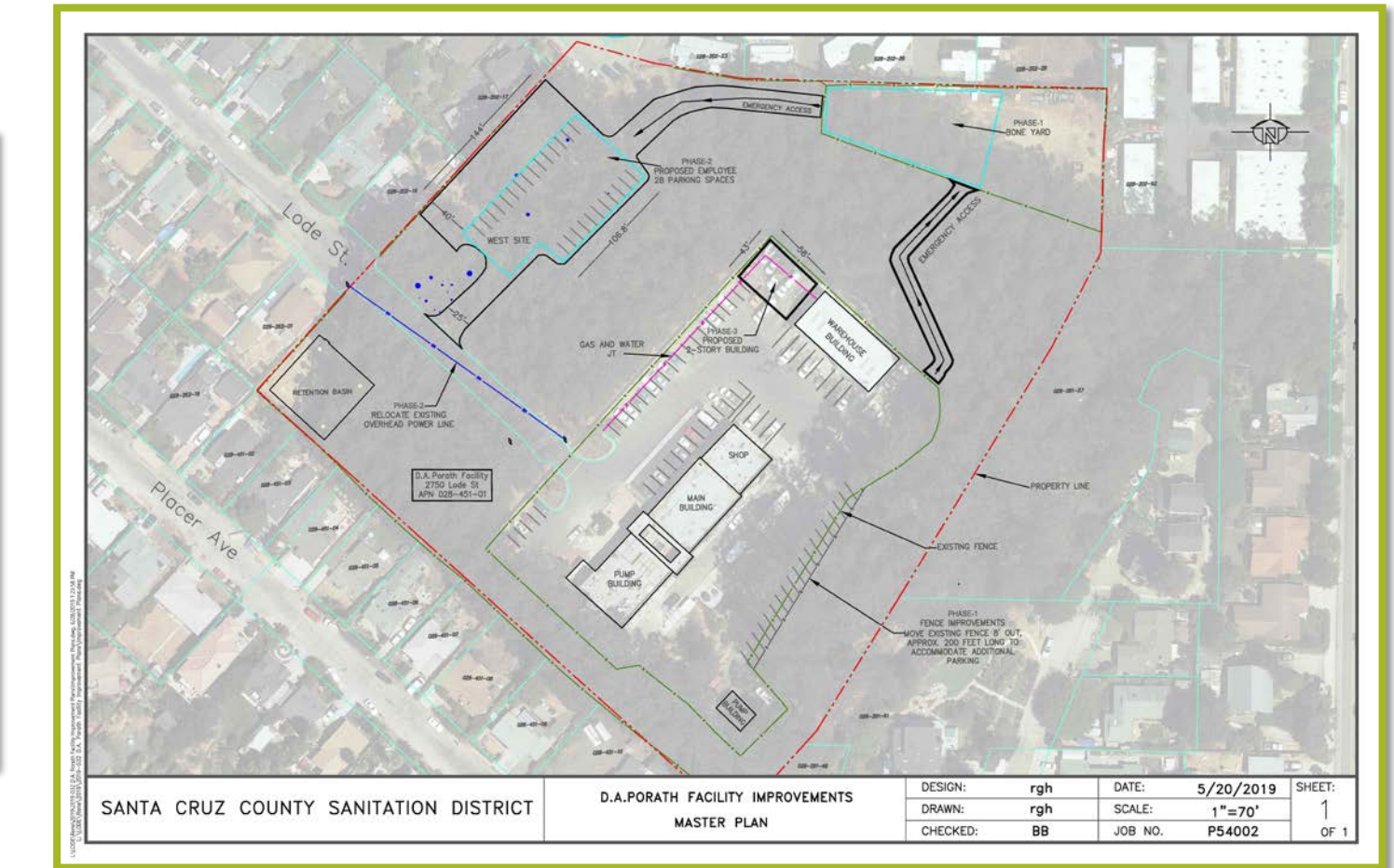
- 1957** Pumping Station With Ocean Outfall:
 - Pumping station on East Cliff Drive at end of Moran Lake – force main transmits sewage northeasterly to the existing sewage treatment plant near the end of Moran Lake opposite Lode Street – an outfall sewer carries sewage from the plant to the Monterey Bay at Sewer Peak/Pleasure Point
- 1970** Population In Santa Cruz Was 40,000
 - Twin Lakes population in 1970 was 3,012
 - Opal Cliffs population in 1970 was 5,603
 - Soquel population in 1970 was 1,379
 - Capitola population in 1970 was 5,080

1973-1990

- 1973** Formation Of The Santa Cruz County Sanitation District (Previously: East Cliff Sanitation, Aptos Sanitation and Capitola Sanitation Districts)
- 1973** Draft Environmental Impact Report For East Cliff Transmission Facility
 - Propose: Treatment Facility Expansion and Interceptor Construction
 - Propose: Demolish East Cliff treatment plant after new pump station constructed
 - Propose: Force main to be constructed from East Cliff to Santa Cruz Treatment Plant
- 1974** East Cliff Transmission Facilities Pumping Station and Force Main Construction
- 1977** East Cliff Transmission Facilities Pumping Station Complete
 - 20 Employees
- 1977** East Cliff Transmission Facilities Force Main Complete



HISTORY OF LODE STREET FACILITY



1991-2005

- 1991** Construction of Metal Storage Building
- 1997** East Cliff Pump Station Diesel Tank Installation
- 2000** Lode Street Facility Master Plan Development Public Meeting – Boone/Low Architects & Planners
 - Eucalyptus Grove Maintenance
 - Auto and yard Vehicle Parking
 - Service Building Modifications
 - Disability Access Review
- 2000** Pump Station Improvements
 - Demolition/Removal of existing raw sewage pumps
 - Installation of larger pumps
 - 230 HP Raw Sewage Pumps
 - Programmable logic controller
 - Electrical Local Control Panel
 - Low Flow Pump addition
 - 40 Employees

2006-2008

- 2006** Pump Station Upgrade
 - New hatch covers
 - Overhead hoist and runway
 - Relocation of existing conduits
- 2007** Facility Improvements
 - Improvements to plumbing, electrical, heating/ventilation system
 - Server Room
 - Electrical shop
 - Operations Work Room (Office)
 - Laboratory
 - Women's locker room
 - Bioxide Room
 - Insulated Pump Room, sound-proofing for the Hydro-Flo Equipment

2009-2018

- 2009** Sound Wall Construction
 - Precast Sound Wall
 - Install Outrigger with Barbed wire
 - Modify existing chain link fence
 - Type C Erosion Control
- 2015** Wet Weather Retention Basin Project
 - 100,000 gallon Wet Weather Retention Basin
- 2017** Population in Santa Cruz 275,897

2019-2022

- 2019** D.A. PORATH FACILITY MASTER PLAN FACILITY IMPROVEMENTS-MWA Architects, Inc. development of Master Plan
 - [Phase 1 FY 2019/2020](#)
 - [Phase 2 FY 2020/2021](#)
 - [Phase 3 FY 2021/2022](#)
 - 50 Employees

